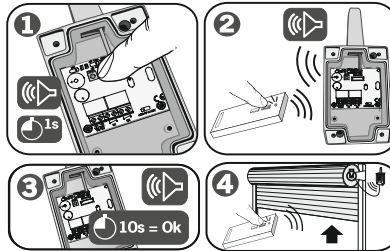


PROGRAMACIÓN MANUAL / MANUAL PROGRAMMING

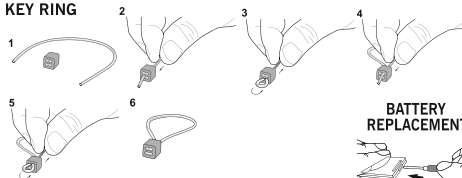


La empresa JCM Technologies S.A. declara que el producto S-G02-RFPIC, S-G04-RFPIC cumple con las disposiciones pertinentes de acuerdo a lo expuesto en el art.3 de la Directiva R&TTE 1999/05/CE.
The manufacturer JCM Technologies S.A. declares that the product S-G02-RFPIC, S-G04-RFPIC complies with the relevant fundamental requirements as per Article 3 of the R&TTE Directive 1999/05/EC.

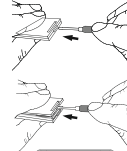
Decl. CE / EC Decl. : www.jcm-tech.com/declarations/

COD. 1246109 / 0.0

KEY RING



BATTERY REPLACEMENT



DATOS TÉCNICOS TECHNICAL DATA
Freq. 868,35MHz Radiated power <1mW
3Vdc CR2032 / 12m A Temp. -20°C - +55°C



PROGRAMACIÓN MANUAL / MANUAL PROGRAMMING